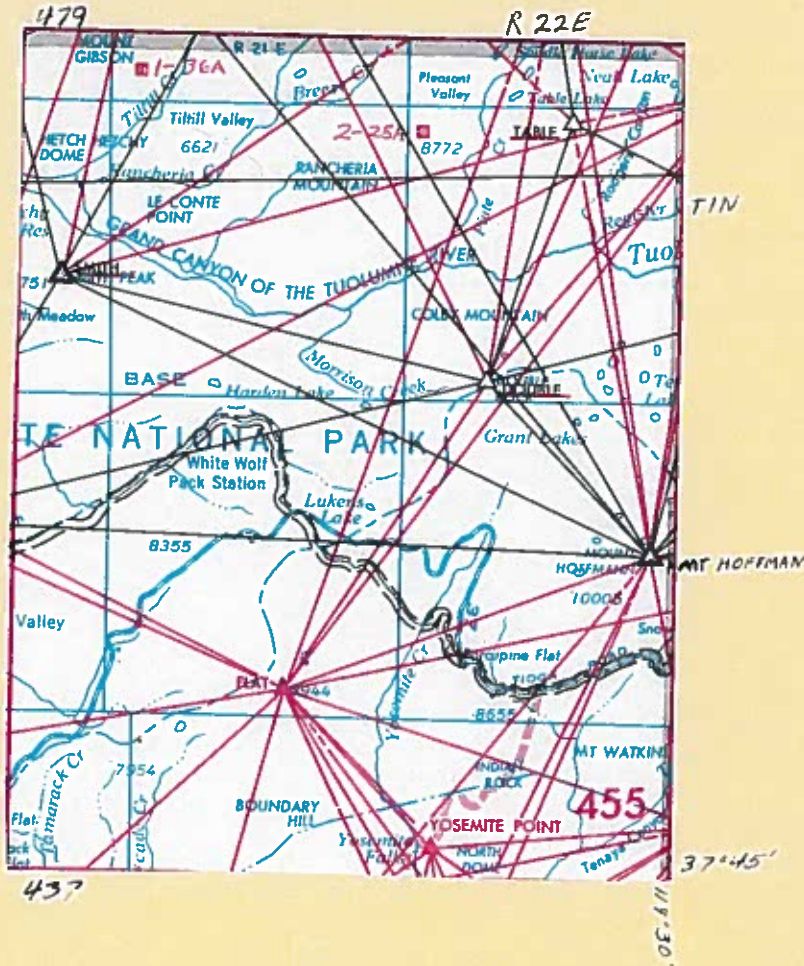


37° 45'
119 30



37°45'
119 30

CALIFORNIA 455

Index

<u>Station</u>	<u>Project</u>
Double (C&GS)	Yosemite
Flat	Yosemite
Mt. Hoffmann (C&GS)	Yosemite
Smith (C&GS)	Yosemite
Table (C&GS)	Yosemite
Yosemite Point (VA 6935)	Yosemite
1-36 A	Yosemite
2-28 A	Yosemite

Yosemite Project Master in CALIFORNIA 437 - Book: PH 470

DOUBLE (C&GS)

Tuolumne-Mariposa Counties

Calif.(455)

USC&GS, 1956

1927 N.A.D.

J. P. Minta, 1956

FILE COPY

Books: PH 469-470

Located about 12.6 mi. E. of Hetch Hetchy Dam, 10.5 mi. N. of Yosemite Valley on the S. side of the Grand Canyon of the Tuolumne; on the W. spire of Double Rock.

Reached by helicopter. (Note, to reach station 25-ft. of rope would be handy.)

Station mark: Standard C&GS disk stamped "DOUBLE 1956" cemented in bedrock.

Reference marks: Standard USC&GS disks were stamped and cemented in bedrock but angles and distances were not obtained.

Signal: Top light stand centered over station mark.

Signal data: Top of stand 4.5 ft.

Image point No. 1: Center of tree, 182 ft. from station mark and 57.5 ft. lower in azimuth $326^{\circ}26'$.

Image point No. 2: Center of tree, 232 ft. from station mark and 55.5 ft. lower in azimuth $18^{\circ}51'$.

Image point No. 3: East edge of tree, 195 ft. from station mark and about 52 ft. lower in azimuth $43^{\circ}11'$.

Photo No. 2-26

CALIFORNIA ZONE 3

X=2,267,993.5

V.A. elevation 9782.0 ft.(USGS,1956)

Y= 511,091.3

*Latitude: $37^{\circ}54'00.17''$

*Longitude: $119^{\circ}34'16.32''$

SEE LATER VALUES

**Field values by USC&GS

11/9/56 mk

FILE COPY

FLAT

Mariposa County

Calif. (455)

C. F. Urquhart, -1905
S. H. Schroeder, 1956

1927 N.A.D. (Prelim.)

FILE COPY

Books: A244-47; PH 469-470

Described in Bul. 310, page 138.

Note by S.H.S., 1956:

Located about _____ mi. NE. of Crane Flat Ranger Station
and _____ mi. NW. of Yosemite Falls, on the high point of
a flat-topped rock extending above the timber tops.

Station reached by helicopter.

Station mark: Existing USGS tablet (not stamped)
cemented in bedrock. (Old station "FLAT" Bul. 310)

Reference mark No. 1: Standard reference mark tablet
stamped "NO 1 1956" cemented in bedrock, 14.91 ft. from
station mark in azimuth 45°41'.

Reference mark No. 2: Standard reference mark tablet
stamped "NO 2 1956" cemented in bedrock, 13.21 ft. from
station mark in azimuth 165°34'.

Signal: Red flag over red X-tgts. nailed to 2 by 2 pole
centered over station mark.

Signal data:	Top red flag	10.7 ft.
	Bottom red flag	8.3
	Top red X-tgt.	6.7
	Bottom red X-tgt.	4.5

Image point No. 1: Center of tree on steep side hill,
133 ft. from station mark in azimuth 19°45'.

Image point No. 2: Center of tree, 78 ft. from station
mark and 14.4 ft. lower in azimuth 46°10'.

Photo No. 2-14

CALIFORNIA ZONE 3

X=2,246;525.

Y= 476,904.

V.A. elevation 8943.6 ft. (1956)

Latitude: 37°48'24.20"

Longitude: 119°38'48.05"

<u>To Station</u>	<u>Azimuth</u>	<u>Back Azimuth</u>	<u>Feet</u>
Double (C&GS)	212°39'03."	32°41'50."	40,372.
Mt. Hoffmann(C&GS)	249 39 26.	69 44 29.	42,240.

FILE COPY

11/9/56 mk *[Signature]*

MT HOFFMANN (C&GS) Mariposa County Calif.(455)

USC&GS, 1956 1927 N.A.D.
L. B. Mansfield, 1956

Books: PH 469-470

FILE COPY

Note: Station was built by C&GS in 1956 and no description available at this time.

Note by L.B.M., 1956: Located about 5 mi. ENE. of Yosemite Cr. Ranger Station and 1.5 mi. due N. of Tioga Pass Road and 1 mi. W. of May Lake; on a prominent Peak known as "MT. HOFFMANN".

Station was reached by helicopter. (May be reached by trail from the S.)

No measurements were taken of reference marks.

Station mark: Standard C&GS disk stamped "MT HOFFMANN 1956"

Reference mark No. 1: Standard reference mark disk stamped "MT HOFFMANN NO 1 1956"

Reference mark No. 2: Standard C&GS reference mark tablet "MT HOFFMAN NO 2 1956".

Signal: Red flag in top of light stand.

Signal data:	Top red flag	7.7 ft.
	Bottom red flag	4.7
	Top light stand	4.7

Image point No. 1: Lone bush on ridge line to S., 139 ft. from station mark and 29.6 ft. lower in azimuth 10°24'.

Image point No. 2: Lone brush W. of ridge line to S., 114 ft. from station mark and 36.3 ft. lower in azimuth 21°04'.

Photo No. 1-60 GS-VJS

FILE COPY

CALIFORNIA ZONE 3
X=2,285,991.7
Y= 491,948.1

V.A. elevation 10,849.7 ft.(USGS 1956)

SEE LATER VALUES

*Latitude: 37°50'49.090" *Longitude: 119°30'34.305"

*=Field values by C&GS

11/9/56 mk *[Signature]*

SMITH (C&GS)

Tuolumne County

Calif. (455)

USC&GS, 1956

1927 N.A.D.

J. P. Minta, 1956

Books: PH 469-470

Located and reached by helicopter.

Station mark: Standard C&GS disk stamped "SMITH 1956" cemented in top of large boulder.

Reference mark No. 1: Standard C&GS reference mark disk stamped "SMITH NO 1 1956" cemented in bedrock, 68.41 ft. from station mark in azimuth $294^{\circ}48'$.

Reference mark No. 2: Not searched for.

Signal: Red cloth wrapped around C&GS light stand centered over station mark.

Signal data: Top of light stand 5.0 ft.

Image point No. 1: Center of tree of NE. end of brush line, 94 ft. from station mark and 24 ft. lower in azimuth $318^{\circ}47'$.

Image point No. 2: Near side of brush in rocks, 157 ft. from station mark and 24.4 ft. lower in azimuth $163^{\circ}10'$.

Photo No. 1-38

CALIFORNIA ZONE 3

X=2,220,930.9

Y= 520,421.9

V.A. elevation 7751.4 ft.(USGS,1956)

SEE LATER VALUES

*Latitude: $37^{\circ}55'36.629''$

*Longitude: $119^{\circ}44'02.525''$

*=Field values by USC&GS

FILE COPY

11/9/56 mk v *9/11/56*

FILE COPY

YOSEMITE POINT (VA 6935) Mariposa County Calif. (455)

C. F. Urquhart, 1905 1927 N.A.D. (Prelim.)
S. H. Schroeder, 1956
Books: A244-247; PH 469-470

Described 1905 in Level Line by R. A. Farmer (Books: 7683) as follows:

"Yosemite Point, at W. end of iron railing; triangulation tablet".

Note by S.H.S., 1956:
Station mark: Standard tablet stamped "6935 1905" set in bedrock.

Signal: Red fluorescent flag centered over station mark.

Signal data:	Top red fluorescent flag	6.8 ft.
	Bottom of flag	4.8
	Top guard rail	4.6
	Middle guard rail	3.1
	Bottom guard rail	1.6

Image point No. 1: A tree, 51 ft. from station mark and 1.0 ft. higher in azimuth 178°15'.

Image point No. 2: A tree, 134.0 ft. from station mark and 15.1 ft. higher in azimuth 187°12'.

Photo No. 1-132 VJS

CALIFORNIA ZONE 3
X=2,262,424.
Y= 458,684.

Elevation 6935.506 ft. (Spirit Leveling by R.A. Farmer, 1905)

Latitude: 37°45'22.59" Longitude: 119°35'32.14"

<u>To Station</u>	<u>Azimuth</u>	<u>Back Azimuth</u>	<u>Feet</u>
Eagle Point (VA 7773)	59°03'39."	239°02'52."	7,229.
Sentinel Dome (VA 8117)	347 52 18.	167 52 38.	12,339.

11/9/56 mk

FILE COPY

TABLE (C&GS)

Tuolumne County

Calif.(455)

USC&GS, 1956

1927 N.A.D.

J. P. Minta, 1956

Books: PH 469-470

U. S. Coast and Geodetic Survey description not received yet.

Note by J.P.M., 1956:

Signal: White flag over fluorescent flag on tripod.

Signal data:	Top white flag	11.5 ft.
	Top fluorescent flag	7.7
	Top tripod	4.5

CALIFORNIA ZONE 3

X=2,276;265.6

Y= 539,489.9

V.A. elevation 9643.4 ft.(USGS,1956)

SEE LATER VALUES

*Latitude: 37°58'40.10"

*Longitude: 119°32'29.49"

*=USC&GS field values

11/9/56 mk *mk*

FILE COPY

FILE COPY

1-36 A

Tuolumne County

Calif. (455)

J. P. Minta, 1956

1927 N.A.D. (Unadj.)

Books: PH 469-470

Located about 18.2 mi. NNW. of Yosemite Valley and 6.0 mi. NE. of Hetch Hetchy Dam; near one of the lesser tops of Gibson Mtn.

FILE COPY

Station reached by helicopter.

Station mark: A $1\frac{1}{2}$ by $2\frac{1}{2}$ ft. oval depression about $\frac{1}{2}$ -in. deep in top of boulder about 15 ft. above general ground level.

Signal: White flag over red X-tgts. nailed to 2 by 2 pole centered over station mark.

Signal data:	Top white flag	11.0 ft.
	Bottom white flag	8.1
	Top red X-tgt.	7.0
	Bottom red X-tgt.	4.8

Image point No. 1: Center of tree, 71 ft. from station mark and 24 ft. lower in azimuth $43^{\circ}04'$.

Image point No. 2: Center of tree, 61 ft. from station mark and 15 ft. lower, in azimuth $196^{\circ}45'$.

Image point No. 3: Center of tree, 105 ft. from station mark and 16 ft. lower in azimuth $204^{\circ}14'$.

Photo No. 1-37

FILE COPY

CALIFORNIA ZONE 3
X=2,229;203.
Y= 542,715

V.A. elevation 8217 ft.

Latitude: $37^{\circ}59'16.34''$

Longitude: $119^{\circ}42'16.92''$

<u>To Station</u>	<u>Azimuth</u>	<u>Back Azimuth</u>	<u>Feet</u>
Bald (C&GS)	$26^{\circ}50'29.0''$	$206^{\circ}47'22.0''$	54,101.
Double (C&GS)	309 40 35.	129 45 30.	50,051.

11/9/56 mk \checkmark

2-28 A

Tuolumne County

Calif.(455)

L. B. Mansfield, 1956

1927 N.A.D.(Unadj.)

Books: PH 469-470

Located about 12.5 mi. NW. of Tenaya Lake, 7.5 mi. NNE. of White Wolf; 2 mi. WSW. of Table Lake on E.-W. ridge that is thickly timbered to the N. Station is on E. end of ridge line in an open area with thinly scattered timber to S.

FILE COPY

Station was reached by helicopter.

Station mark and signal: White flag over red X-tgts. on pole set in cairn.

Signal data:	Top white flag	12.1 ft.
	Bottom white flag	9.1
	Top red X-tgt.	8.0
	Bottom red X-tgt.	5.8

Image point No. 1: Lone tree, 215 ft. from station mark in azimuth 56°43'.

Photo No. 2-28 VJS

CALIFORNIA ZONE 3

X=2,259,539.

Y= 536,392

V.A. elevation 8772. ft.

Latitude: 37°58'11.22"

Longitude: 119°35'58.76"

<u>To Station</u>	<u>Azimuth</u>	<u>Back Azimuth</u>	<u>Feet</u>
Richardson (C&GS)	147°31'12."	327°27'48."	49,262.
1-56 A	260 25 15.	80 29 41.	35,113.

FILE COPY

11/9/56 mk

VJS