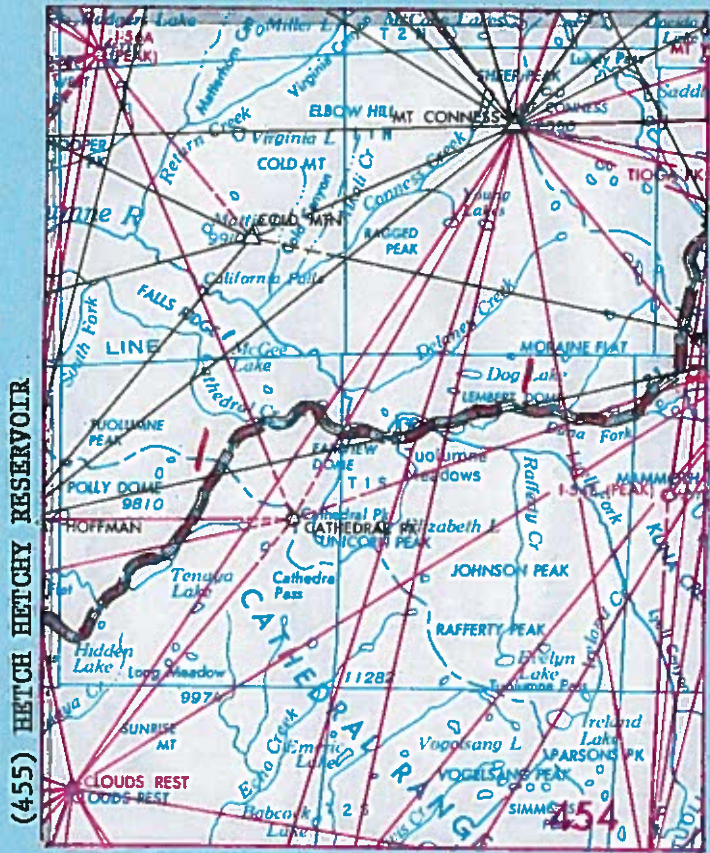


(471) MATTERHORN PEAK



(436) MERCED PEAK

- (1) C.R. Smith 1898
- (2) C.R. Smith 1898

- 6274, Bul. 766
- 6274, Bul. 766

TUOLUMNE MEADOWS

~~MT. GONNESS~~ (454) STATE

CALIFORNIA

BrC.R. SMITH, 1898.

ALTIMUDE ABOVE  
MEAN SEA LEVEL  
(Feet)

THIRD

Adj.

1929 GENERAL

6274

766, pg. 446

THIRD ORDER

for Publication

not distribute

CALIFORNIA

~~MT. GONNESS~~ QUADRANGLE

(Latitude 37°45'-38°00' ; Longitude 119°15'-119°30')

MARIPOSA-TUOLUMNE-MONO COUNTIES

FILE COPY

1) FROM DANA FORK TRAIL WEST TO SODA SPRINGS

Soda Springs, 3.5 mi. east of, on north side of Tioga rd., where trail comes in from the meadows east of rd., in ledge of rock; aluminum bolt stamped "U.S.G.S. 9270 ft. B.M.O."

Not Found 87  
9275.559

Soda Springs, 100 ft. west of, in large granite boulder on south side of trail; aluminum bolt stamped "U.S.G.S. 8594 ft. B.M.O."

OK  
8599.441

T. 1 S., R. 23 E., SE corner of sec. 1, Diablo meridian; iron post stamped "8555 0"

OK  
8560.883

Cathedral Creek, in conspicuous rock in north side of creek bed, 50 ft. from rd.; aluminum bolt stamped "U.S.G.S. 8337 ft. B.M.O."

Not Found 87  
8342.940

Lake Tenaya, on west shore of, about 300 ft. east of three log cabins in grove of trees, in large boulder between rd. & lake shore; aluminum tablet stamped "U.S.G.S. 8146 ft. B.M.O."

Not Found 87  
8151.312

Lake Tenaya; surface of water, September 17, 1898

8146.7

Snow Flat, 300 ft. SW of wooden culvert in rd. X-ing, in large granite boulder, on west side of rd.; aluminum tablet stamped "U.S.G.S. 8705 Ft. B.M.O." (recovered in 1906 by leveling from Merced, and correction made)

8710.07  
8711.206

-END OF LINE-

1957  
37-119-1

hms 183  
7.53

7/27/54 is ✓

TUOLUMNE MEADOWS

D. MT. CONNESS (454) STATE CALIFORNIA BY C.R. SMITH, 1898

RE THIRD Adj. 1929 GENERAL

(2) 37 45  
119 15  
ALTIMUDE ABOVE  
MEAN SEA LEVEL  
(Feet)

K: 6274

L: 766, pg. 446

Third Order  
for Publication  
Not Distribute

CALIFORNIA

~~MT. CONNESS~~ QUADRANGLE

(Latitude 37°45'-38°00' ; Longitude 119°15'-119°30')

MARIPOSA-TUOLUMNE-MONO COUNTIES

FILE COPY

(2) FROM DANA FORK TRAIL NORTH TO TIOGA

Tioga Pass summit, on rock on east side of rd., aluminum tablet stamped "9941 ft. B.M.O."

9946.953  
Destroyed 86

Tioga mine, at SW corner of assay office, in ledge of rock; round iron plug set in cement and marked "9795"

9800.510

-END OF LINE-

7/27/54 is ✓