

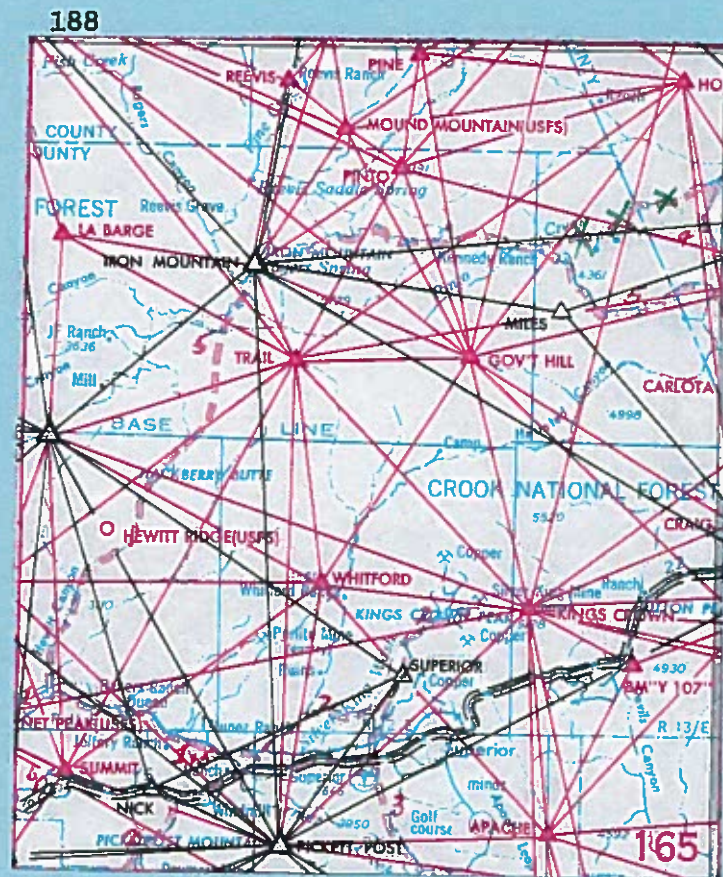
SUPERIOR

Lat. 33°15'  
Long. 111°00'

ARIZONA 165

C&GS 33 111 2

(1)	T. Winsor	1899	8498
(2)	"	"	"
(3)	"	1900	"
(4)	L. E. Marsden	1944	V 117
(5)	K. S. McLean	1946	V 264
(6)	"	"	"



THIRD-ORDER LEVELING  
Sea Level Datum of 1929

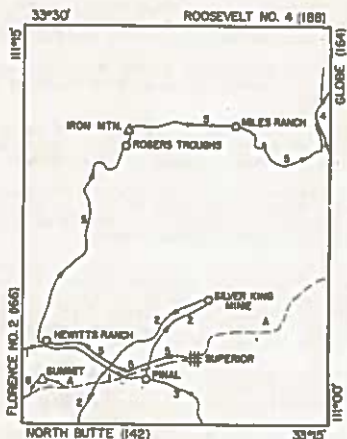
UNITED STATES  
DEPARTMENT OF THE INTERIOR  
GEOLOGICAL SURVEY

SUPERIOR QUADRANGLE  
ARIZONA 185  
N3315-W11100/15

FILE COPY

Gila, Maricopa  
and Pinal Counties  
Edition of 3/21/57

Only the standard  
tablets are listed  
for lines run more  
than 25 years be-  
fore the above  
edition date



FILE COPY

USC&GS Level Line

A. Superior Area, Arizona (No. 55) Second order

Feet

LINE 1

FROM FLORENCE NO. 2 QUADRANGLE (166) SOUTHEAST ALONG ROAD TO PINAL (by T. Winsor, 1899; Book 8L98)

- Hewitts Ranch, 1.0 mi. E. of; on NE. side of rd.; 70 ft. NW. of Queen Creek; standard iron post with bronze cap stamped "2171 PHNX" 2170.464
- Pinal, 3.0 mi. W. of; on S. side of rd. at side hill; 100 ft. E. of a wash; standard iron post with bronze cap stamped "2336 PHNX" 2335.703
- Pinal, 500 ft. N. of town; on E. side of rd.; in sandstone outcrop; aluminum tablet stamped "2529 PHNX" 2528.565

LINE 2

FROM PINAL NORTHEAST ALONG ROAD TO SILVER KING MINE THENCE SOUTHWEST ALONG ROAD INTO NORTH BUTTE QUADRANGLE (142) (by T. Winsor, 1899; Book 8L98)

- Pinal, 500 ft. N. of town; aluminum tablet stamped "2529 PHNX" (Described in Line 1) 2528.565
- Silver King, 2.0 mi. SW. of; 170 ft. N. of wash; on E. side of rd.; in pink sandstone boulder; aluminum tablet stamped "3023 PHNX" 3022.461
- Silver King, on W. edge of town; at summit of steep hill; on S. side of rd.; standard iron post with bronze cap stamped "3553 PHNX" 3552.324
- Silver King, 4.8 mi. SW. of; at jct. with rd. leading N. to Whitfords Ranch; standard iron post with bronze cap stamped "2561 PHNX" 2560.461
- Superior, 6.0 mi. W. of high school along U. S. Highway 60 thence 0.1 mi. S. along dirt rd. leading to the old hwy.; 4.0 mi. NE. of Reymert; 0.2 mi. NE. of old hwy.; 250 ft. E. of a gate in a stone corral; 210 ft. N. of a windmill; 100 ft. SE. of the center of rd.; 40 ft. W. of corral corner; standard iron post with bronze cap stamped "2406 PHNX" (Recovered by USC&GS, 1935) 2405.294

LINE 3

FROM NORTH BUTTE QUADRANGLE (142) NORTHWEST ALONG ROAD TO PINAL (by T. Winsor, 1900; Book 8L98)

- Pinal, 2.8 mi. SE. of; on top of rocky mound; on NE. side of rd.; 250 ft. NW. of wash; in boulder; aluminum tablet stamped "2682 PHNX" 2681.743
- Pinal, 500 ft. N. of town; aluminum tablet stamped "2529 PHNX" (Described in Line 1) 2528.565

LINE 4

FROM GLOBE QUADRANGLE (164) NORTH ALONG ROAD AND BACK INTO GLOBE QUADRANGLE (164) NEAR HORREL RANCH (by L. E. Marsden, 1944; Book V117a)

- Horrel Ranch, 3.3 mi. S. of; 5.8 mi. NW. of jct. of Pinto Creek and Castle Dome Roads; 0.1 mi. N. of jct. of rd. to Miles Ranch; 175 ft. E. of Pinto Creek; at concrete cattle guard; on N. end of E. headwall; chiseled square 3144.99

Horrel Ranch, 2.3 mi. S. of; in wide saddle and W. of small rocky top; 295 ft. N. and 75 ft. E. of cattle guard; 160 ft. E. of rd.; in large boulder standard tablet stamped "9 M 1944 3281"

738  
3281.708

Reference mark, 270 ft. SW. of concrete cattle guard; on N. end of E. headwall; chiseled square

06  
3275.03

Horrel Ranch, 1.5 mi. S. of; 80 ft. W. of center of rd.; on grassy top; in root on SW. side of palo verde trees; copper nail and washer

46  
3284.77

LINE 5

FROM A POINT 2.3 MILES WEST OF SUPERIOR SOUTHWEST ALONG U. S. HIGHWAY 60 AND 70 2.6 MILES THENCE NORTHWEST ALONG QUEENS CREEK ROAD 4.8 MILES THENCE NORTH ALONG ROAD UP HEWITT CANYON TO ROGERS TROUGHS THENCE EAST TO MILES RANCH THENCE EAST 6.5 MILES ALONG MILES RANCH ROAD TO THE PINTO CREEK ROAD THENCE NORTH ALONG ROAD TO A POINT 2.3 MILES SOUTH OF HORREL RANCH (by K. S. McLean, 1946; Book V264a)

"S 107 1935" (USC&GS) 2619.857

"2592" (USC&GS) 2591.369

"R 107 1935" (USC&GS) Reset by ASHD, 1947 2409.288  
8.005

Superior Post Office, 4.4 mi. SW. along U. S. Highway 60 thence 1.0 mi. W. from along rd. beside Magna Arizona Railroad tracks; at E. end of RR. bridge; on E. bank of large dry wash; 100 ft. W. of rd.; 52 ft. SW. of center of tracks at E. end of bridge; 18 ft. W. of pole; 6 ft. higher than wash; in rock ledge; standard tablet stamped "1 KSM 1946 2332"

2619.857

Reference mark, 185 ft. E. of tablet; 45 ft. S. of center of tracks; 18 ft. N. of rd.; in powerline pole; spike 2343.77

Superior Post Office, 4.4 mi. SW. along U. S. Highway 60 thence 2.0 mi. W. from along rd. beside Magna Arizona Railroad tracks; at sharp rd. dip; 86 ft. N. of rd.; 58 ft. N. of W. end of RR. bridge; on concrete footing of SW. corner of powerline tower; chiseled square 2278.97

Superior Post Office, 4.4 mi. SW. along U. S. Highway 60 thence 3.2 mi. W. from along rd. beside Magna Arizona Railroad tracks; at Hewitt School; 72 ft. N. of rd.; 23 ft. S. of school front door; in concrete footing of flag pole in yard of Hewitt School; standard tablet stamped "2 KSM 1946 2220" 2219.776

Reference mark, 102 ft. SE. of tablet; 22 ft. S. of rd.; 14 ft. E. of W. end of RR. bridge; in support beam; RR. spike 2218.96

Superior Post Office, 4.4 mi. SW. along U. S. Highway 60 thence 4.8 mi. W. from along rd. beside Magna Arizona Railroad tracks; at mouth of Hewitt Canyon wash where it joins Queen Creek wash; 118 ft. W. of rd. intersection; 39 ft. S. of S. edge of dry wash; 16 ft. E. of old rd.; on rock outcrop; chiseled square 2146.01

Mouth of Hewitt Canyon, 0.9 mi. N. of along Hewitt Canyon Road; 19 ft. E. of rd.; 3 ft. above wash; in large rock; standard tablet stamped "3 KSM 1946 2194" 2193.550

Reference mark, 52 ft. S. of tablet; 14 ft. E. of rd.; on rock outcrop; chiseled square 2191.84

Mouth of Hewitt Canyon, 2.0 mi. N. of along Hewitt Canyon Road; 11 ft. E. of rd.; 2 ft. higher than wash bottom; on E. edge of wash; at foot of high rocky bank; on rock outcrop; chiseled square 2263.423

Mouth of Hewitt Canyon, 3.0 mi. N. of along Hewitt Canyon Road; at point where rd. makes sharp turn E. and enters main wash; between huge rimrock cliffs; 20 ft. S. of rd.; 2 ft. higher than wash; on S. edge of wash; on rock outcrop; chiseled square 2345.46

Mouth of Hewitt Canyon, 3.9 mi. N. of along Hewitt Canyon Road; at foot of huge rock outcrop 11 ft. W. of and 2 ft. higher than rd.; in a dark pink rock ledge; standard tablet stamped "4 KSM 1946 2422" 2422.279

Reference mark, 215 ft. SW. of tablet; 11 ft. W. of rd.; on pink boulder; chiseled square 2417.01

Mouth of Hewitt Canyon, 4.9 mi. N. of along Hewitt Canyon Road; 25 ft. W. of rd.; 1 ft. higher than wash; on pink ledge outcrop; chiseled square 2510.64

Mouth of Hewitt Canyon, 6.0 mi. N. of along Hewitt Canyon Road; at the foot of a high jagged rock outcrop point; 27 ft. W. and 3 ft. higher than rd.; in ledge; standard tablet stamped "5 KSM 1946 2619" 2618.811

Reference mark, 249 ft. SE. of tablet; 39 ft. E. of rd.; 2 ft. above wash; on blue rock; chiseled square 2612.60

\* see last page

FILE COPY

Line 5 (continued)

Mouth of Hewitt Canyon, 7.0 mi. N. of along Hewitt Canyon Road; on W. edge of wash; 74 ft. W. of and 3 ft. higher than rd.; on yellow sandstone outcrop; chiseled square	2740.25	Reference mark, 118 ft. W. of tablet; 142 ft. NE. of NW. gate in corral; on rock outcrop; chiseled square	3680.66
Mouth of Hewitt Canyon, 7.9 mi. W. of along Hewitt Canyon Road; 205 ft. NW. of point where rd. leaves wash; 92 ft. W. of rd.; 17 ft. above wash; on W. edge of wash; in top of S. rim of old concrete and masonry ore chute; standard tablet stamped "6 KSM 1946 2864"	2864.082	Iron Mountain Peak, 7.4 mi. E. of along trail leading to Miles Ranch; near base of sheer high rock bluff; on SE. edge of Pinto Creek Canyon; on NE. end of large flat topped boulder; chiseled square	3538.48
Reference mark, 150 ft. S. of tablet; on W. side of drain; opposite point where rd. leaves wash; on large grey outcrop; chiseled square	2848.16	Iron Mountain Peak, 8.6 mi. E. of along trail leading to Miles Ranch; at Miles Ranch; in NE. corner of concrete footing of rock masonry water tank; standard tablet stamped "13 KSM 1946 3449"	3448.593
Mouth of Hewitt Canyon, 7.9 mi. N. along Hewitt Canyon Road to an old ore chute thence 1.0 mi. N. from along trail near and S. of summit of low divide; 15 ft. W. of and 6 ft. higher than trail; on large rock ledge; chiseled square	3212.535	Reference mark No. 1, 85 ft. W. of tablet; 20 ft. SE. of orchard fence; on rock outcrop; chiseled square	3446.87
Mouth of Hewitt Canyon, 7.9 mi. N. along Hewitt Canyon Road to an old ore chute thence 2.1 mi. N. from along old trail; 3.3 mi. SW. of Rogers Troughs; 0.2 mi. S. of the watershed divide at the head of Hewitt Canyon; 36 ft. W. of and 21 ft. higher than trail; in large rock outcrop; standard tablet stamped "7 KSM 1946 3560"	3559.432	Reference mark No. 2, 0.2 mi. W. of ranch house; in a circular wood-pole corral; on W. end of concrete water trough; chiseled square	3446.39
Reference mark, 74 ft. SE. of tablet; 7 ft. W. of trail; on outcrop; chiseled square	3537.29	Miles Ranch, 1.1 mi. E. of along rd. leading to jct. with Pinto Creek Road; at bend in rd.; 28 ft. S. of drain crossing; 15 ft. SW. of drain; on large blue boulder; chiseled square	3689.62
Rogers Troughs, 2.3 mi. SW. of; on a narrow ridge; 27 ft. SW. of and 6 ft. higher than trail; on jagged outcrop; chiseled square	4116.78	Miles Ranch, 2.2 mi. E. of along rd. leading to jct. with Pinto Creek Road; at N. end of corral; 102 ft. NW. of corral gate; 50 ft. SW. of rd.; 35 ft. NW. of 20-in. juniper tree; 8 ft. higher than a small spring; in large rock ledge; standard tablet stamped "14 KSM 1946 4002"	4001.495
Rogers Troughs, 1.3 mi. SW. of; near the "Flow and Scraper"; 22 ft. W. of trail; in low ledge on E. side of huge rock outcrop; standard tablet stamped "8 KSM 1946 4542"	4541.410	Reference mark, 64 ft. S. of tablet; 45 ft. NW. of center of corral gate; 4 ft. higher than dry creekbed; on rock outcrop; chiseled square	4000.93
Reference mark, 34 ft. S. of tablet; 22 ft. W. of trail; on rock pinnacle; chiseled square	4539.83	Miles Ranch, 2.7 mi. SE. of along rd. leading to jct. with Pinto Creek Road; at summit of divide; 15 ft. W. of rd.; in butt of 8-in. oak tree; RR. spike	4166.78
Rogers Troughs, 0.7 mi. SW. of; at summit of barren rocky ridge divide; 79 ft. S. of trail; on outcrop; chiseled square	4915.77	Miles Ranch, 3.7 mi. SE. of along rd. leading to jct. with Pinto Creek Road; on W. end of S. side of concrete curbing on cattleguard; chiseled square	4063.82
Rogers Troughs, in top of SW. corner of large concrete water trough with spring water piped into it; standard tablet stamped "9 KSM 1946 4883"	4883.212	Miles Ranch, 4.4 mi. SE. along rd. leading to jct. with Pinto Creek Road; at drain crossing; 65 ft. N. of rd. at a 36-in. metal culvert; 28 ft. E. of dry creekbed; in large boulder; standard tablet stamped "15 KSM 1946 3601"	3600.716
Reference mark, 58 ft. SW. of tablet; 21 ft. NW. of center of gate; on outcrop; chiseled square	4877.10	Reference mark, 88 ft. W. of tablet; 20 ft. N. of rd.; on boulder; chiseled square	3594.83
Rogers Troughs, 1.1 mi. NE. of along trail; at summit of an E.-W. ridge near a jagged rock cliff; 51 ft. E. of and 11 ft. lower than trail; on rocky point; chiseled square	5738.34	Miles Ranch, 5.3 mi. SE. of along rd. leading to jct. with Pinto Creek Road; 0.8 mi. W. of jct. of Miles Ranch-Pinto Creek Roads; on W. end of S. side of concrete curbing on cattleguard; chiseled square	3405.95
Iron Mountain Triangulation Station (USFS), located on U. S. Forest Service Trail 1.5 mi. N. of Rogers Troughs; at summit of Iron Mountain Peak; in highest point of rock outcrop; USDA bronze tablet stamped "VISIBLE AREA MAP, POINT, IRON MOUNTAIN FOREST SERVICE 1938" (Lat.: 33°25'57.51" N Long.: 111°10'10.635" W)	6055.680	Horrel Ranch, 3.3 mi. S. of; 0.1 mi. N. of jct. of Miles Ranch-Pinto Creek Roads; chiseled square (Described in Line 4)	3144.93
Reference mark, 50 ft. SE. of tablet; on rock outcrop; chiseled square	6053.87	Horrel Ranch, 2.3 mi. S. of; standard tablet stamped "9 M 1944 3281" (Described in Line 4)	3281.708
Iron Mountain Peak, 1.0 mi. E. of along trail leading to Miles Ranch; 51 ft. E. of center of gate; 5 ft. S. of trail; on rock outcrop; chiseled square	5473.02	<u>LINE 6.</u>	
Iron Mountain Peak, 2.0 mi. E. of along trail leading to Miles Ranch; on a low and relatively flat ridge point; 15 ft. NE. and 5 ft. higher than trail; on large pointed rock outcrop; chiseled square	4656.86	FROM A POINT 8.0 MILES WEST ALONG U. S. HIGHWAY 60 FROM SUPERIOR NORTHWEST TO TRIANGULATION STATION SUMMIT THENCE SOUTHWEST TO A POINT 10.0 MILES WEST ALONG U. S. HIGHWAY 60 FROM SUPERIOR (by K. S. McLean, 1946; Book V263)	
Iron Mountain Peak, 2.4 mi. E. of along trail leading to Miles Ranch; at point where trail joins W. fork of Pinto Creek Trail; 114 ft. SE. of trail; 18 ft. E. and 4 ft. higher than creekbed; in large rock ledge; standard tablet stamped "10 KSM 1946 4434"	4433.477	"Q 107 1935" (USC&GS)	2499.870
Reference mark, 115 ft. N. of tablet; 35 ft. E. and 7 ft. higher than creekbed; on rock outcrop; chiseled square	4434.52	Reference mark, 21 ft. W. of and 20 ft. S. of tablet; in W. end of S. concrete curb chiseled square	2498.98
Iron Mountain Peak, 3.5 mi. E. of along trail leading to Miles Ranch; 30 ft. S. of large drain fork from N. side of Pinto Creek; on rock ledge of a rocky point; chiseled square	4207.90	Superior High School, 9.5 mi. SW. of along U. S. Highway 60; at summit of grade; on S. metal head-wall of small metal culvert; chiseled square	2644.04
Iron Mountain Peak, 4.5 mi. E. of along trail leading to Miles Ranch; at bend in creekbed; opposite a long sloping E.-W. ridge on E. side of canyon; 15 ft. NE. and 4 ft. higher than creekbed; in rock ledge; standard tablet stamped "11 KSM 1946 3996"	3995.797	Summit Triangulation Station, (USGS) located 9.5 mi. SW. of Superior High School along U. S. Highway 60 to summit of grade thence NE. (over land) up ridge 0.2 mi. to summit of peak; on highest point of peak; in rock outcrop; standard triangulation tablet stamped "SUMMIT 1946 3011" (Lat.: 33°16'44.456" N Long.: 111°13'56.871" W)	3010.929
Reference mark, 46 ft. NW. of tablet; 10 ft. NE. of dry creekbed; on rock ledge outcrop; chiseled square	3993.56	Reference mark, 54 ft. S. of tablet; on quartz outcrop; chiseled square	3010.21
Iron Mountain Peak, 5.5 mi. E. of along trail leading to Miles Ranch; 150 ft. S. of a minor canyon fork; 36 ft. N. of foot of small rock waterfall; on rock ledge of vertical rock wall on W. side of dry creekbed; chiseled square	3816.69	"P 107 1935" (USC&GS)	2481.737
Iron Mountain Peak, 6.4 mi. E. of along trail leading to Miles Ranch; at Oak Flat; near jct. of Spencer Spring Creek and W. fork of Pinto Creek; 260 ft. NE. of NW. gate in a wooden corral; 22 ft. NW. of a huge rock cairn at signpost painted "MILES RANCH 10 MILES, CAMPAIGN CREEK"; in rock outcrop; standard tablet stamped "12 KSM 1946 3677"	3677.060		

Line 5 (continued)

Mouth of Hewitt Canyon, 7.0 mi. N. of along Hewitt Canyon Road; on W. edge of wash; 74 ft. W. of and 3 ft. higher than rd.; on yellow sandstone outcrop; chiseled square	2740.25	Reference mark, 118 ft. W. of tablet; 142 ft. NE. of NW. gate in corral; on rock outcrop; chiseled square	3680.66
Mouth of Hewitt Canyon, 7.9 mi. W. of along Hewitt Canyon Road; 205 ft. NW. of point where rd. leaves wash; 92 ft. W. of rd.; 17 ft. above wash; on W. edge of wash; in top of S. rim of old concrete and masonry ore chute; standard tablet stamped "6 KSM 1946 2864"	2864.082	Iron Mountain Peak, 7.4 mi. E. of along trail leading to Miles Ranch; near base of sheer high rock bluff; on SE. edge of Pinto Creek Canyon; on NE. end of large flat topped boulder; chiseled square	3538.48
Reference mark, 150 ft. S. of tablet; on W. side of drain; opposite point where rd. leaves wash; on large grey outcrop; chiseled square	2848.16	Iron Mountain Peak, 8.6 mi. E. of along trail leading to Miles Ranch; at Miles Ranch; in NE. corner of concrete footing of rock masonry water tank; standard tablet stamped "13 KSM 1946 3449"	3448.593
Mouth of Hewitt Canyon, 7.9 mi. N. along Hewitt Canyon Road to an old ore chute thence 1.0 mi. N. from along trail near and S. of summit of low divide; 15 ft. W. of and 6 ft. higher than trail; on large rock ledge; chiseled square	3212.535	Reference mark No. 1, 85 ft. W. of tablet; 20 ft. SE. of orchard fence; on rock outcrop; chiseled square	3446.87
Mouth of Hewitt Canyon, 7.9 mi. N. along Hewitt Canyon Road to an old ore chute thence 2.1 mi. N. from along old trail; 3.3 mi. SW. of Rogers Troughs; 0.2 mi. S. of the watershed divide at the head of Hewitt Canyon; 36 ft. W. of and 21 ft. higher than trail; in large rock outcrop; standard tablet stamped "7 KSM 1946 3560"	3559.432	Reference mark No. 2, 0.2 mi. W. of ranch house; in a circular wood-pole corral; on W. end of concrete water trough; chiseled square	3446.39
Reference mark, 74 ft. SE. of tablet; 7 ft. W. of trail; on outcrop; chiseled square	3537.29	Miles Ranch, 1.1 mi. E. of along rd. leading to jct. with Pinto Creek Road; at bend in rd.; 28 ft. S. of drain crossing; 15 ft. SW. of drain; on large blue boulder; chiseled square	3689.62
Rogers Troughs, 2.3 mi. SW. of; on a narrow ridge; 27 ft. SW. of and 6 ft. higher than trail; on jagged outcrop; chiseled square	4116.78	Miles Ranch, 2.2 mi. E. of along rd. leading to jct. with Pinto Creek Road; at N. end of corral; 102 ft. NW. of corral gate; 50 ft. SW. of rd.; 35 ft. NW. of 20-in. juniper tree; 8 ft. higher than a small spring; in large rock ledge; standard tablet stamped "14 KSM 1946 4002"	4001.495
Rogers Troughs, 1.3 mi. SW. of; near the "Flow and Scrapper"; 22 ft. W. of trail; in low ledge on E. side of huge rock outcrop; standard tablet stamped "8 KSM 1946 4542"	4541.410	Reference mark, 64 ft. S. of tablet; 45 ft. NW. of center of corral gate; 4 ft. higher than dry creekbed; on rock outcrop; chiseled square	4000.93
Reference mark, 34 ft. S. of tablet; 22 ft. W. of trail; on rock pinnacle; chiseled square	4539.83	Miles Ranch, 2.7 mi. SE. of along rd. leading to jct. with Pinto Creek Road; at summit of divide; 15 ft. W. of rd.; in butt of 8-in. oak tree; RR. spike	4166.78
Rogers Troughs, 0.7 mi. SW. of; at summit of barren rocky ridge divide; 73 ft. S. of trail; on outcrop; chiseled square	4915.77	Miles Ranch, 3.7 mi. SE. of along rd. leading to jct. with Pinto Creek Road; on W. end of S. side of concrete curbing on cattleguard; chiseled square	4063.82
Rogers Troughs, in top of SW. corner of large concrete water trough with spring water piped into it; standard tablet stamped "9 KSM 1946 4883"	4883.212	Miles Ranch, 4.4 mi. SE. along rd. leading to jct. with Pinto Creek Road; at drain crossing; 65 ft. N. of rd. at a 36-in. metal culvert; 28 ft. E. of dry creekbed; in large boulder; standard tablet stamped "15 KSM 1946 3601"	3600.716
Reference mark, 58 ft. SW. of tablet; 21 ft. NW. of center of gate; on outcrop; chiseled square	4877.10	Reference mark, 88 ft. W. of tablet; 20 ft. N. of rd.; on boulder; chiseled square	3594.83
Rogers Troughs, 1.1 mi. NE. of along trail; at summit of an E.-W. ridge near a jagged rock cliff; 51 ft. E. of and 11 ft. lower than trail; on rocky point; chiseled square	5738.34	Miles Ranch, 5.3 mi. SE. of along rd. leading to jct. with Pinto Creek Road; 0.8 mi. W. of jct. of Miles Ranch-Pinto Creek Roads; on W. end of S. side of concrete curbing on cattleguard; chiseled square	3405.95
Iron Mountain Triangulation Station (USFS), located on U. S. Forest Service Trail 1.5 mi. N. of Rogers Troughs; at summit of Iron Mountain Peak; in highest point of rock outcrop; USDA bronze tablet stamped "VISIBLE AREA MAP POINT IRON MOUNTAIN FOREST SERVICE 1938" (Lat.: 33°25'57.519" Long.: 111°10'10.635")	6055.680	Horrel Ranch, 3.3 mi. S. of; 0.1 mi. N. of jct. of Miles Ranch-Pinto Creek Roads; chiseled square (Described in Line 4)	3144.93
Reference mark, 50 ft. SE. of tablet; on rock outcrop; chiseled square	6053.87	Horrel Ranch, 2.3 mi. S. of; standard tablet stamped "9 M 1944 3281" (Described in Line 4)	3281.708
Iron Mountain Peak, 1.0 mi. E. of along trail leading to Miles Ranch; 51 ft. E. of center of gate; 5 ft. S. of trail; on rock outcrop; chiseled square	5473.02	<u>LINE 6.</u>	
Iron Mountain Peak, 2.0 mi. E. of along trail leading to Miles Ranch; on a low and relatively flat ridge point; 15 ft. NE. and 5 ft. higher than trail; on large pointed rock outcrop; chiseled square	4656.86	FROM A POINT 8.0 MILES WEST ALONG U. S. HIGHWAY 60 FROM SUPERIOR NORTHWEST TO TRIANGULATION STATION SUMMIT, THENCE SOUTHWEST TO A POINT 10.0 MILES WEST ALONG U. S. HIGHWAY 60 FROM SUPERIOR (by E. S. McLean, 1946; Book V263)	
Iron Mountain Peak, 2.4 mi. E. of along trail leading to Miles Ranch; at point where trail joins W. fork of Pinto Creek Trail; 111 ft. SE. of trail; 18 ft. E. and 4 ft. higher than creekbed; in large rock ledge; standard tablet stamped "10 KSM 1946 4434"	4433.477	"Q 107 1935" (USC&GS)	2499.870
Reference mark, 115 ft. N. of tablet; 35 ft. E. and 7 ft. higher than creekbed; on rock outcrop; chiseled square	4434.52	Reference mark, 21 ft. W. of end 20 ft. S. of tablet; in W. end of S. concrete curb chiseled square	2498.98
Iron Mountain Peak, 3.5 mi. E. of along trail leading to Miles Ranch; 30 ft. S. of large drain fork from N. side of Pinto Creek; on rock ledge of a rocky point; chiseled square	4207.90	Superior High School, 9.5 mi. SW. of along U. S. Highway 60; at summit of grade; on S. metal head-wall of small metal culvert; chiseled square	2644.04
Iron Mountain Peak, 4.5 mi. E. of along trail leading to Miles Ranch; at bend in creekbed; opposite a long sloping E.-W. ridge on E. side of canyon; 15 ft. NE. and 4 ft. higher than creekbed; in rock ledge; standard tablet stamped "11 KSM 1946 3996"	3995.797	Summit Triangulation Station, (USGS) located 9.5 mi. SW. of Superior High School along U. S. Highway 60 to summit of grade thence NE. (over land) up ridge 0.2 mi. to summit of peak; on highest point of peak; in rock outcrop; standard triangulation tablet stamped "SUMMIT 1946 3011" (Lat.: 33°16'44.456" Long.: 111°13'56.871")	3010.929
Reference mark, 46 ft. NW. of tablet; 10 ft. NE. of dry creekbed; on rock ledge outcrop; chiseled square	3993.56	Reference mark, 54 ft. S. of tablet; on quartz outcrop; chiseled square	3010.21
Iron Mountain Peak, 5.5 mi. E. of along trail leading to Miles Ranch; 150 ft. S. of a minor canyon fork; 36 ft. N. of foot of small rock waterfall; on rock ledge of vertical rock wall on W. side of dry creekbed; chiseled square	3816.69	"P 107 1935" (USC&GS)	2481.737
Iron Mountain Peak, 6.4 mi. E. of along trail leading to Miles Ranch; at Oak Flat; near jct. of Spencer Spring Creek and W. fork of Pinto Creek; 250 ft. NE. of NW. gate in a wooden corral; 22 ft. NW. of a huge rock cairn at signpost painted "MN RANCH 10 MILES, CAMPAIGN CREEK"; in rock outcrop; standard tablet stamped "12 KSM 1946 3677"	3677.060		

Line #1

NOTE: This line was run by Third Order methods but closure was 0.338 ft. low in a distance of 10.47 miles. This closure error has been prorated in the line.

165

Line #3 . affects "+681.743" only

NOTE: This line was run by Third Order methods but closure was 0.329 ft. high in a distance of 20.25 miles. This closure error has been prorated in the line.

165